



PARTS LIST



Models

Mfg. No.	Description
7800201	MD2250, 22" Walk Behind (2008)
7800202	MD2255, 22" Walk Behind (2008)
7800203	M2265HW, 22" Walk Behind (2008)
7800204	MP2265, 22" Walk Behind (2008)
7800205	MP22675HW, 22" Walk Behind (2008)
7800239	NMD2250, 22" Walk Behind (2008)
7800240	NM2255, 22" Walk Behind (2008)
7800241	NM2265HW, 22" Walk Behind (2008)
7800242	NMP2265, 22" Walk Behind (2008)
7800243	NMP22675HW, 22" Walk Behind (2008)
7800257	MD2250FC, 22" Walk Behind (2009)
7800258	M2255FC, 22" Walk Behind (2008)
7800259	M2265HWFC, 22" Walk Behind (2009)
7800260	MP2265FC, 22" Walk Behind (2008)
7800261	MP22675HWFC, 22" Walk Behind (2009)
7800369	M2255HFC, 22" Walk Behind (2009)

Manual Part No. 7102549

Revision D

Rev. Date: 2/10/2010

Not for
Reproduction

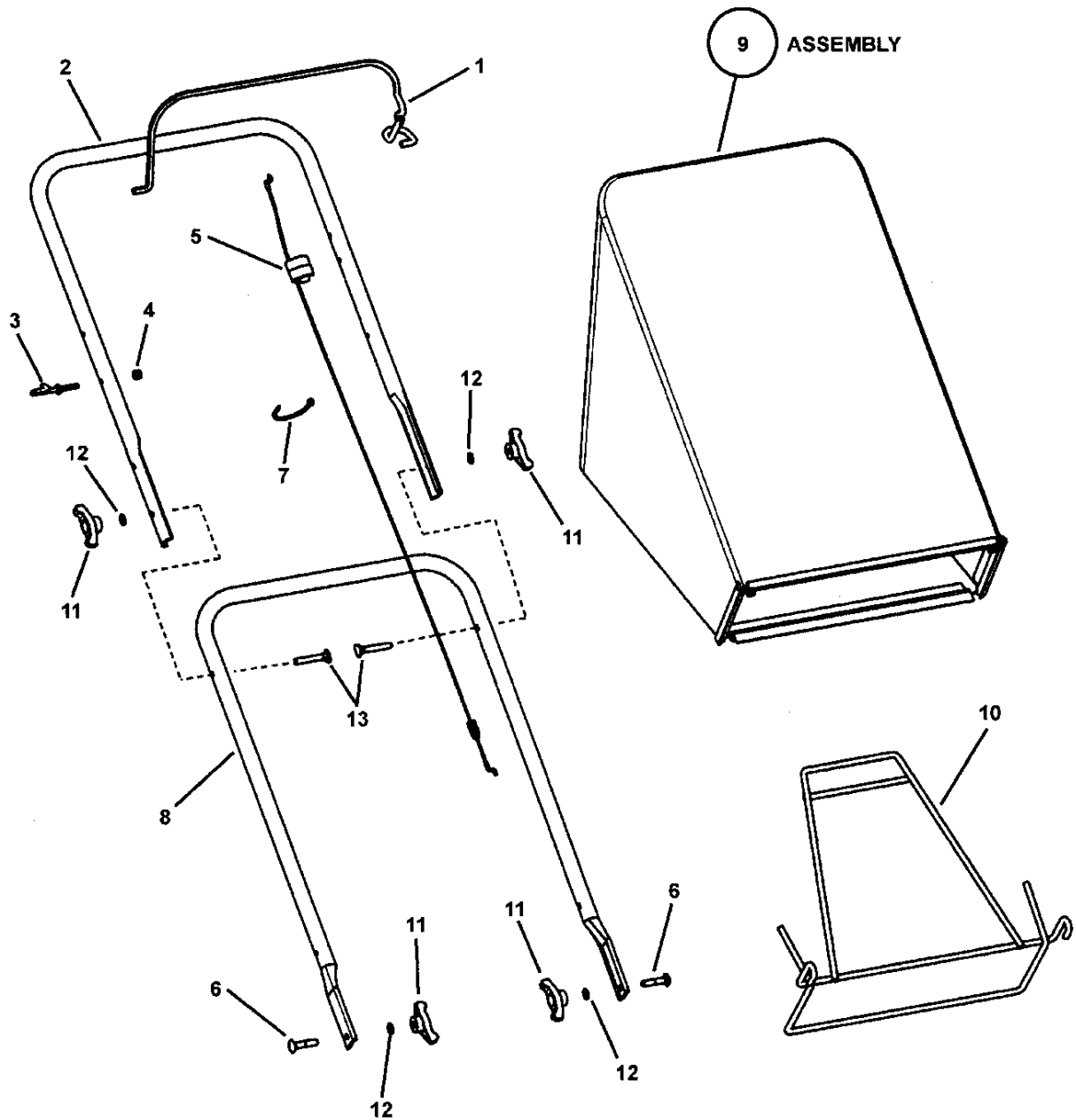
PRODUCT COMPONENTS	PAGES
Handles & Controls - Push	4
Handles & Controls - Self-Propelled	6
Engine, Blade & Front Cover	8
Decals	10
Deck Assembly - Push, Side Discharge	12
Deck Assembly - Push, 3-n-1	14
Deck Assembly - Push, Hi-Wheel	16
Deck Assembly - Self-Propelled, Standard Wheels	18
Deck Assembly - Self-Propelled, Hi-Wheel	20
Torque Specification Chart	Inside Back Cover

Not for
Reproduction

Handles & Controls - Push

mu22hcpu

NOTE: Unless noted otherwise,
use the standard hardware torque
specification chart.



The above parts group applies to the following Mfg. Nos.:

7800201 - MD2250	7800241 - NM2265HW
7800202 - MD2255	7800257 - MD2250FC
7800203 - M2265HW	7800258 - M2255FC
7800239 - NMD2250	7800259 - M2265HWFC
7800240 - NM2255	7800369 - M2255HFC

Handles & Controls - Push

REF NO	PART NO.	QTY.	DESCRIPTION
1	7101675AYP	1	BAIL, OPC Push
2	7300705AMA	1	UPPER HANDLE, Propelled
3	071530MA	1	GUIDE, Rope - 1/4-20 thread
4	7076978SM	1	NUT, 1/4-20 Nyloc
5	7101808YP	1	CABLE, Bail, - 45.00" overall length (used on 7800201 & 7800257)
5	7101330YP	1	CABLE, Bail, 22" WBM, - 41.50" overall length (used on 7800202 & 7800258)
5	7100074YP	1	CABLE, Zone Control - 48.60" overall length (used on 7800203 & 7800259)
6	002X81MA	2	BOLT, 5/16-18 x 1-1/2" Square Neck Carriage GR 1
6	1931337SM	2	BOLT, 5/16-18 x 1-1/2" Short Square Neck Carriage GR 5
7	7024649YP	3	WIRE TIE, 11 Inch Std Black Nylon
8	7300706AMA	1	HANDLE, Lower
9	7101893MA	1	ASSY, Grass Bag, Cloth - incl. next item below (used on 7800202, 7800258 & 7800203)
--	1101005MA	1	BAG, Cloth, Grass Bag, Murray
10	1101074MA	1	WELDMENT, Frame, Grass Bag (used on 7800202, 7800258 & 7800203)
11	071294MA	4	KNOB, Wing, 5/16-18
12	7090391SM	4	WASHER, 5/16" Internal Tooth Lock
13	7091189YP	2	BOLT, 5/16-18 x 2" Curved Head Square Neck GR 2

Not for
Reproduction

Footnotes

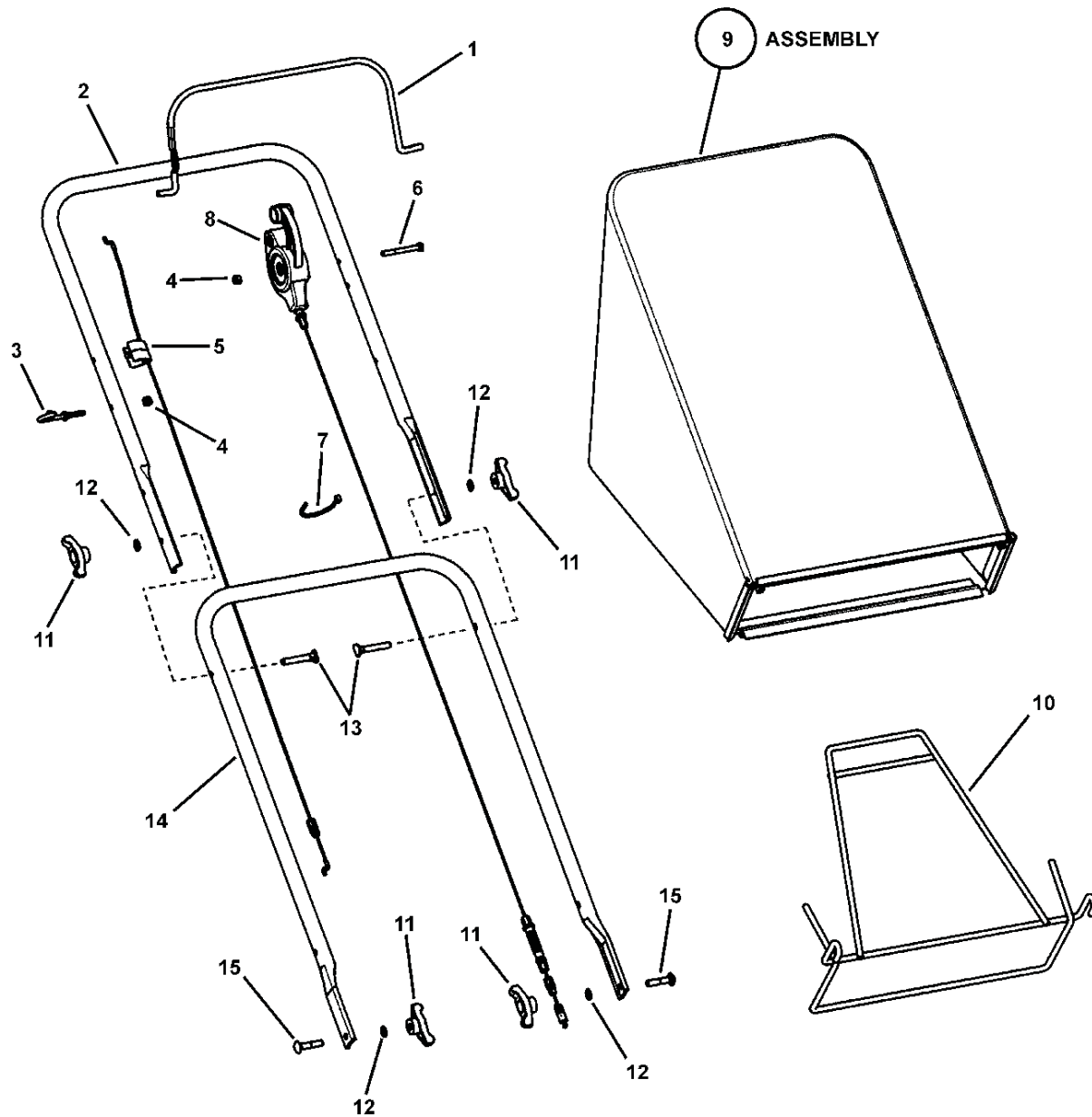
The above parts group applies to the following Mfg. Nos.:

7800201 - MD2250	7800241 - NM2265HW
7800202 - MD2255	7800257 - MD2250FC
7800203 - M2265HW	7800258 - M2255FC
7800239 - NMD2250	7800259 - M2265HWFC
7800240 - NM2255	7800369 - M2255HFC

Handles & Controls - Self-Propelled

mu22hcsp

NOTE: Unless noted otherwise,
use the standard hardware torque
specification chart.



The above parts group applies to the following Mfg. Nos.:

- 7800204 - MP2265
- 7800205 - MP22675HW
- 7800242 - NMP2265
- 7800243 - NMP22675HW
- 7800260 - MP2265FC
- 7800261 - MP22675HWFC

Handles & Controls - Self-Propelled

REF NO	PART NO.	QTY.	DESCRIPTION
1	7101676AMA	1	BAIL, OPC Propelled
2	7300705AMA	1	UPPER HANDLE, Propelled
3	071530MA	1	GUIDE, Rope - 1/4-20 thread
4	7076978SM	2	NUT, 1/4-20 Nyloc
5	7101862YP	1	CABLE, Bail, Std Propelled - 53.50" overall length (used on 7800204 & 7800260)
5	7101861MA	1	CABLE, Bail, Hi-Wheel Propelled - 58.00" overall length (used on 7800205 & 7800261)
6	7090892YP	1	SCREW, 1/4-20 x 2-1/4 Hex Head Cap, GR 5
7	7024649YP	4	WIRE TIE, 11 Inch Std Black Nylon
8	7101858YP	1	CONTROL, Drive, Single Speed Std Wheel (used on 7800204 & 7800260)
8	1101670MA	1	CONTROL, Drive, Single Speed Hi-Wheel (used on 7800205 & 7800261)
9	7101893MA	1	ASSY, Grass Bag, Cloth - incl. next item below
--	1101005MA	1	BAG, Cloth, Grass Bag, Murray
10	1101074MA	1	WELDMENT, Frame, Grass Bag
11	7035744YP	4	KNOB, 5/16-18 Wing - Black
12	7090391SM	4	WASHER, 5/16" Internal Tooth Lock
13	7091189YP	2	BOLT, 5/16-18 x 2" Curved Head Square Neck GR 2
14	7300706AMA	1	HANDLE, Lower
15	002X81MA	2	BOLT, 5/16-18 x 1-1/2" Square Neck Carriage
15	1931337SM	2	BOLT, 5/16-18 x 1-1/2" Short Square Neck Carriage GR 5

Not for
Reproduction

Footnotes

The above parts group applies to the following Mfg. Nos.:

7800204 - MP2265
7800205 - MP22675HW
7800242 - NMP2265
7800243 - NMP22675HW
7800260 - MP2265FC

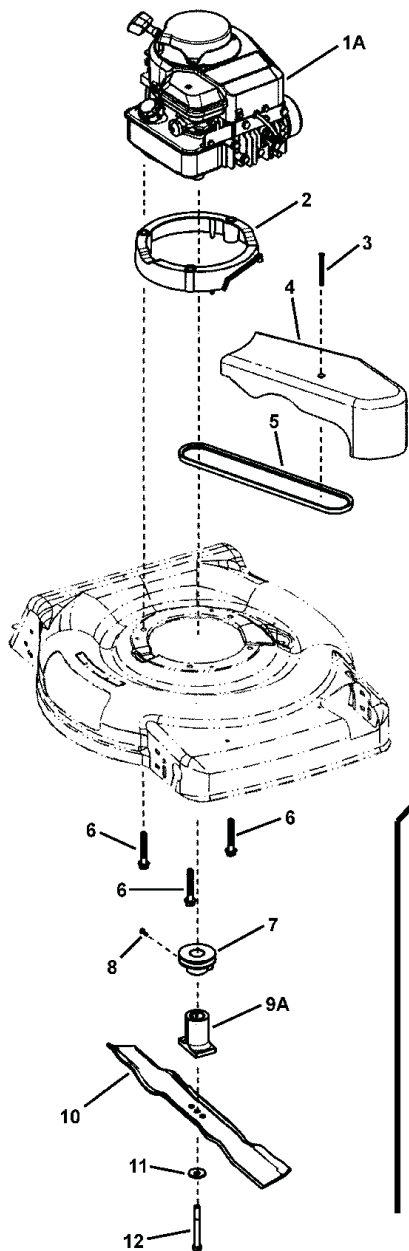
7800261 - MP22675HWFC

Engine, Blade & Front Cover

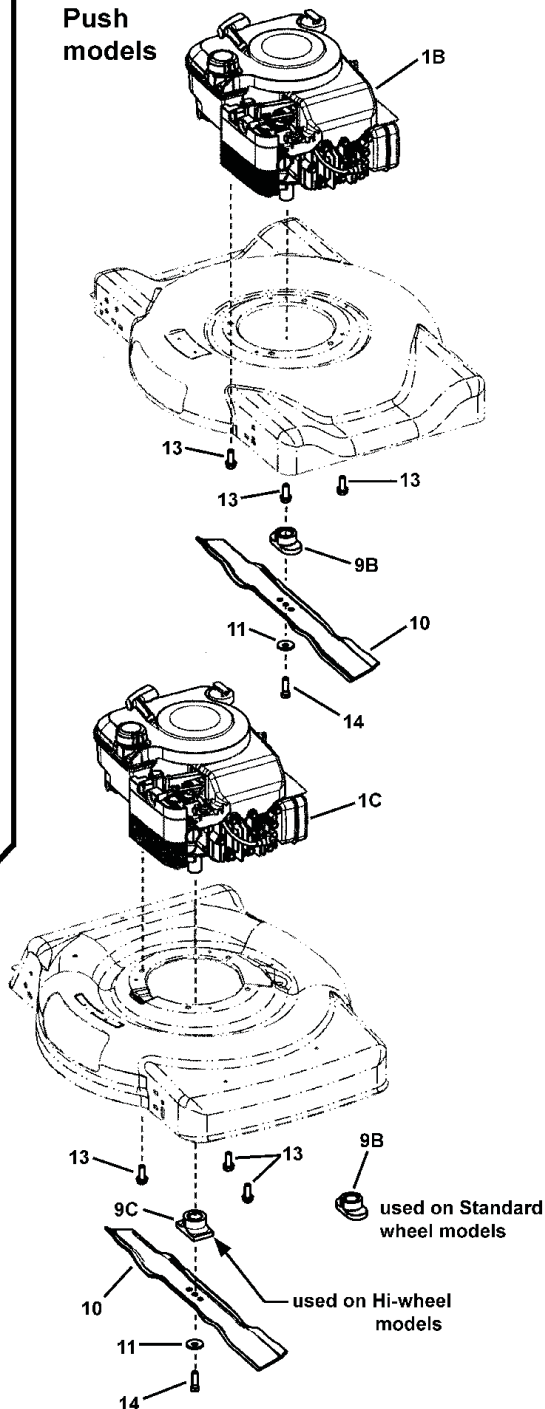
mu22ebfc

NOTE: Unless noted otherwise, use the standard hardware torque specification chart.

Self-propelled models



Push models



The above parts group applies to the following Mfg. Nos.:

- | | | | |
|---------------------|----------------------|-----------------------|--------------------|
| 7800201 - MD2250 | 7800239 - NMD2250 | 7800257 - MD2250FC | 7800369 - M2255HFC |
| 7800202 - MD2255 | 7800240 - NM2255 | 7800258 - M2255FC | |
| 7800203 - M2265HW | 7800241 - NM2265HW | 7800259 - M2265HWFC | |
| 7800204 - MP2265 | 7800242 - NMP2265 | 7800260 - MP2265FC | |
| 7800205 - MP22675HW | 7800243 - NMP22675HW | 7800261 - MP22675HWFC | |

Engine, Blade & Front Cover

REF NO	PART NO.	QTY.	DESCRIPTION
1A	124T02-0650-B3	1	* ENGINE, B&S, 650 Ser, B3, X-Spec (used on 7800204 & 7800203)
1A	124T02-0301-B1	1	* ENGINE, B&S, 650 Ser, B1, X-Spec (used on 7800260 & 7800259)
1A	124L02-0650-F3	1	* ENGINE, B&S, 650 Ser, F3, X-Spec (used on 7800241 & 7800242)
1A	126T02-0675-B3	1	* ENGINE, B&S, 675 Ser, B3, X-Spec (used on 7800205)
1A	126L02-0675-F3	1	* ENGINE, B&S, 675 Ser, F3, X-Spec (used on 7800243)
1A	126T02-0177-B1	1	* ENGINE, B&S, 675 Ser, X-Spec, B1, FC (used on 7800261)
1B	---	1	* ENGINE, B&S, 500 Ser, Murray XSQ, F1 - TBD (used on 7800239)
1B	10T602-0114-B1	1	* ENGINE, B&S, 500 Ser, Murray, XSQ, B1 (used on 7800201)
1B	10T602-0119-B1	1	* ENGINE, B&S, 500 Series, FC (used on 7800257)
1C	---	1	* ENGINE, B&S, 550 Ser, Murray XAQ, F1 - TBD (used on 7800240)
1C	10T802-0144-B1	1	* ENGINE, B&S, 550 Ser, X, B3 (used on 7800202)
1C	10T802-0147-B1	1	* ENGINE, B&S, 550 Ser, XAQ, B1 (used on 7800258)
1C	---	1	* ENGINE, Honda, 160 GCV, FC (not shown) (used on 7800369)
2	7101449YP	1	** ASSY, Engine Spacer, 22 WBM, Propelled
3	26X304MA	1	SCREW, #10-24 x 2-1/2
4	1101596MA	1	COVER, Belt, Plastic
5	7101193MA	1	BELT, Drive 22 WBM, SS - 3L sect. 33.75 effective length
6	025X11MA	3	BOLT, 3/8-16 x 2-1/2 Hex Washer Face
7	7100763MA	1	PULLEY, Engine, 22 Deck, Single Speed
8	26X303MA	1	SCREW, #8-11 x 5/8 Poly
9A	7100740YP	1	HUB, Blade, 22" Deck - self-propelled (Used on self-propelled models)
9B	1101825MA	1	HUB, Blade, 22" Push (Used on push models with standard wheels)
9C	7100862YP	1	HUB, Blade, 22" Push (Used on push models with hi-wheels)
10	7100851AYP	1	BLADE, 22" Walk Mower
11	1101989MA	1	WASHER, Bellville, .38 ID x 1.183 OD
12	01X144MA	1	BOLT, 3/8-24 x 3-1/4 Hex Head, GR 8
13	7090324SM	3	SCREW, 3/8-16 x 1 Hex Washer Self-Tap
14	7090824YP	1	SCREW, 3/8-24 x 1-1/4 Hex Head Cap, GR 5

Footnotes

NOTE: * Purchase engine parts from engine manufacturer dealer.

Note: ** Engine Spacer Assembly includes 3 bushings, p/n 7101448.

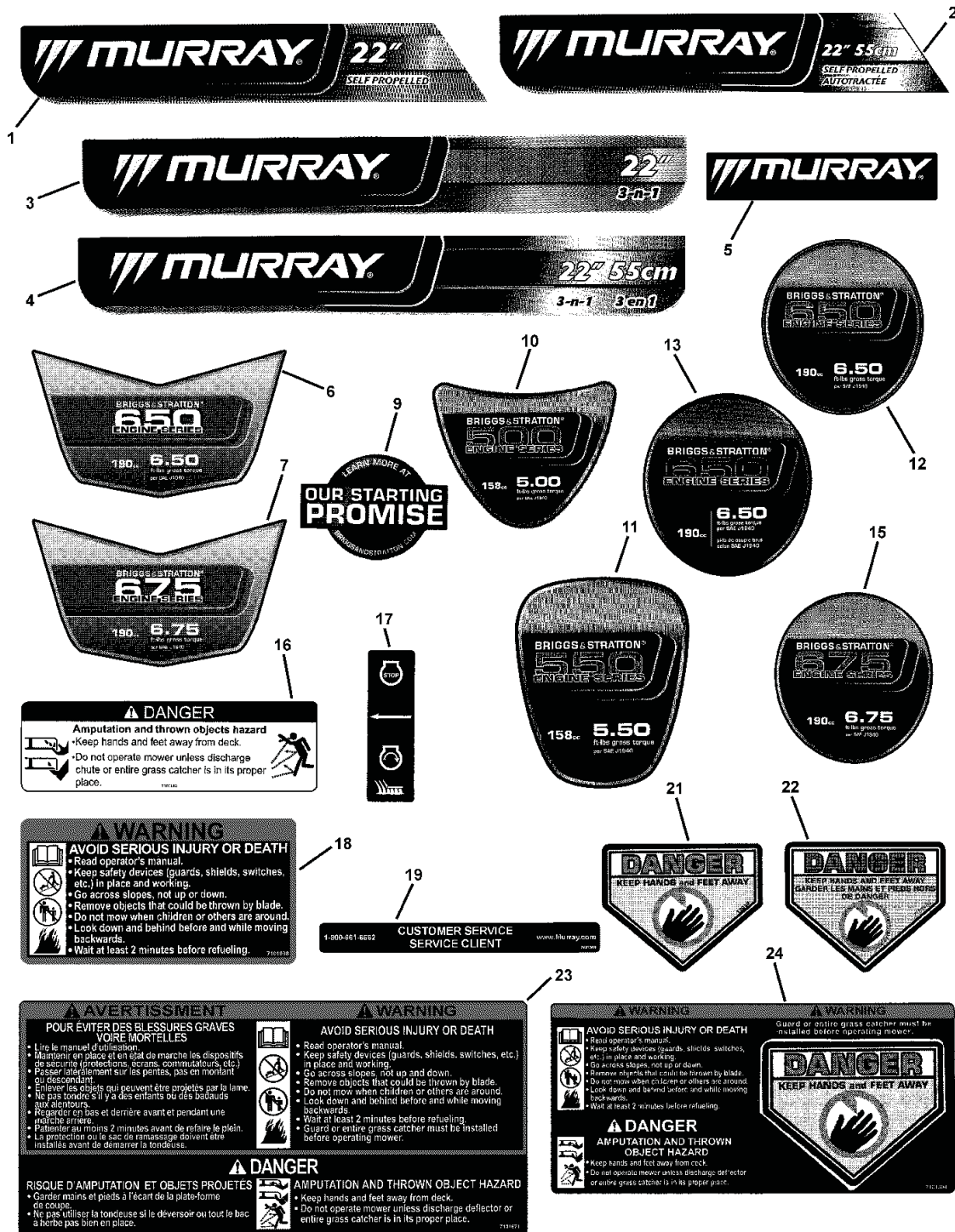
The above parts group applies to the following Mfg. Nos.:

7800201 - MD2250	7800239 - NMD2250	7800257 - MD2250FC	7800369 - M2255HFC
7800202 - MD2255	7800240 - NM2255	7800258 - M2255FC	
7800203 - M2265HW	7800241 - NM2265HW	7800259 - M2265HWFC	
7800204 - MP2265	7800242 - NMP2265	7800260 - MP2265FC	
7800205 - MP22675HW	7800243 - NMP22675HW	7800261 - MP22675HWFC	

Decals

mu22_dcl

NOTE: Unless noted otherwise, use the standard hardware torque specification chart.



The above parts group applies to the following Mfg. Nos.:

7800201 - MD2250	7800239 - NMD2250	7800257 - MD2250FC	7800369 - M2255HFC
7800202 - MD2255	7800240 - NM2255	7800258 - M2255FC	
7800203 - M2265HW	7800241 - NMP2265HW	7800259 - M2265HWF	
7800204 - MP2265	7800242 - NM2265	7800260 - MP2265FC	
7800205 - MP22675HW	7800243 - NMP22675HW	7800261 - MP22675HWF	

Decals

REF NO	PART NO.	QTY.	DESCRIPTION
1	7101932YP	1	DECAL, Murray Logo, Deck
2	7102313YP	1	DECAL, Murray Logo, Deck, SS, FC (used on 7800260)
3	7101902YP	1	DECAL, Murray Logo, Deck
4	7102314YP	1	DECAL, Murray Logo, Deck, Push, FC (used on 7800258)
5	7101901YP	1	DECAL, Murray Logo, Deck
6	7102268YP	1	DECAL, Engine, Murray, TP, 650, Calif. (used on 7800241 & 7800242)
7	7102269YP	1	DECAL, Engine, Murray, TP, 675, Calif. (used on 7800243)
8	7102270YP	1	DECAL, Engine, Murray, TP, 500 (used on 7800239) (Not Shown)
9	277878YP	1	DECAL, Starting Promise (used on 7800243)
10	7101930YP	1	DECAL, Engine, Murray, TP, 500
11	7101929YP	1	DECAL, Engine, Murray, TP, 550
12	7101903YP	1	DECAL, Engine, Murray, TP, 650
13	7102166YP	1	DECAL, Engine, TP, 650, Murray, FC (used on 7800260)
14	7102272YP	1	DECAL, Engine, Murray, TP, 550, FC (Not shown)
15	7101909YP	1	DECAL, Engine, Murray, TP, 675
16	7101110YP	1	DECAL, Danger, Deck, MY 07.5
17	7029782MA	1	DECAL, OPC Bail International Symbol
18	7101908YP	1	DECAL, Warning, Walk-Behind Mower
19	7102369YP	1	DECAL, Customer Service, Murray
21	7013010SM	1	DECAL, Danger, Cut Finger
22	7101495YP	1	DECAL, CPSC, French/English
23	7101671YP	1	DECAL, WB Safety, French/English
24	7101394YP	1	DECAL, Warning, Rear Discharge Door
--	7102167YP	1	DECAL, Engine, TP, 675, Murray, FC (Not shown)
--	7102271YP	1	DECAL, Engine, Murray, TP, 500, FC (Not shown)
--	7102305YP	1	DECAL, Honda, 160 GCV, FC (Not shown)
--	7102373YP	1	DECAL, RF/EMC, Honda, P# 87629-ZG9-8012 (Not shown)
--	7102286YP	1	DECAL, Meets CPSC Requirements (Used on California Models) (Not Shown)

Footnotes

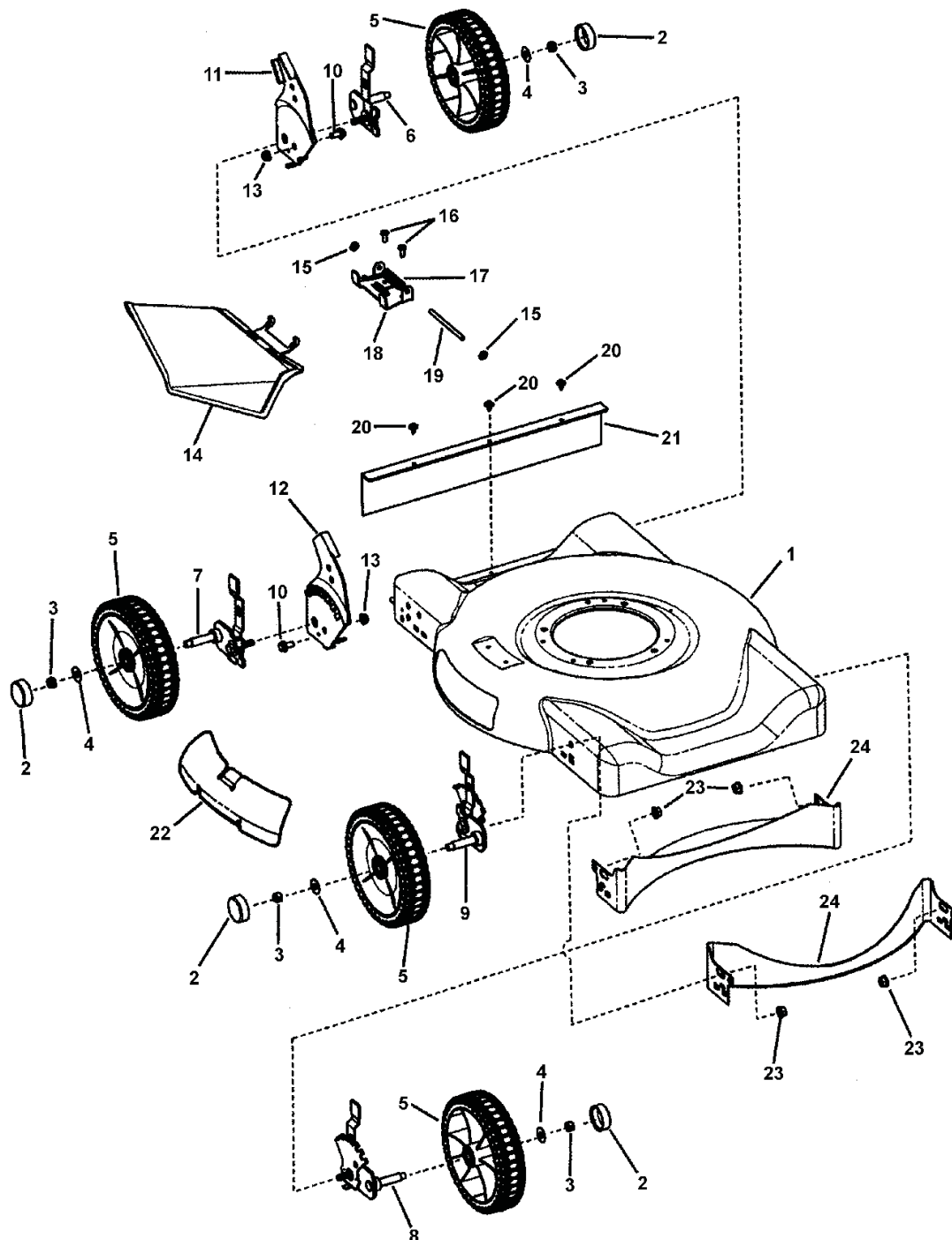
The above parts group applies to the following Mfg. Nos.:

7800201 - MD2250	7800239 - NMD2250	7800257 - MD2250FC	7800369 - M2255HFC
7800202 - MD2255	7800240 - NM2255	7800258 - M2255FC	
7800203 - M2265HW	7800241 - NM2265HW	7800259 - M2265HWFC	
7800204 - MP2265	7800242 - NMP2265	7800260 - MP2265FC	
7800205 - MP22675HW	7800243 - NMP22675HW	7800261 - MP22675HWFC	

Deck Assembly - Push, Side Discharge

md22dapu

NOTE: Unless noted otherwise,
use the standard hardware torque
specification chart.



The above parts group applies to the following Mfg. Nos.:

7800201 - MD2250

7800239 - NMD2250

Deck Assembly - Push, Side Discharge

REF NO	PART NO.	QTY.	DESCRIPTION
1	7300691ZYP	1	DECK, 22" WBM, Side Discharge used on MD2250 & MD2250FC models
2	7101351MA	4	HUBCAP, Round, Black
3	7091585SM	4	NUT, 3/8-16 Hex Center Lock, YZ
4	17X169MA	4	WASHER, 1" O.D. x .387 I.D. Flat
5	7500541YP	4	ASSY, Wheel, 8"x 2" Idle, Murray Tread, BB, Gray incl. two 1-1/8" O.D. Flanged Ball Bearings - p/n 7101380
6	7501060YP	1	ASSY, Height-of-Cut, Left Rear, 22" WBM, Low Cost
7	7501059YP	1	ASSY, Height-of-Cut, Right Rear, 22" WBM, Low Cost
8	7501064YP	1	ASSY, Height-of-Cut, Left Front, 7 Position
9	7501063YP	1	ASSY, Height-of-Cut, Right Front, 7 Position
10	7091811SM	2	BOLT, 5/16-18 x 5/8" Hex Flange Lock, YZ
11	7300851ZYP	1	BRACKET Lower Handle, LH Low Cost
12	7300850ZYP	1	BRACKET Lower Handle, RH Low Cost
13	7091601SM	2	NUT, 5/16-18 Flange Lock, YZ
14	672421MA	1	CHUTE, Plastic S/D
15	7091020YP	2	PUSHNUT, 1/4"
16	26X217MA	2	SCREW, 1/4-20 x 11/16" Pan Head Self-Tap - Torx
17	0166X5MA	1	SPRING, Torsion, Chute
18	7300852ZYP	1	BRACKET, Chute Low Cost
19	215X11ZMA	1	ROD, Pivot, Mulch Cover
20	7091286YP	3	SCREW, #10-24 x 1/2" Hex Washer Self-Tap - Sems
21	672738MA	1	GUARD, Rear
22	672422ZMA	1	PLATE, Mulch
23	7900053MA	4	NUT, 3/8-16 Hex Flange Lock, GR 5
24	7300853ZYP	2	BAFFLE, 22" Side Discharge

Footnotes

The above parts group applies to the following Mfg. Nos.:

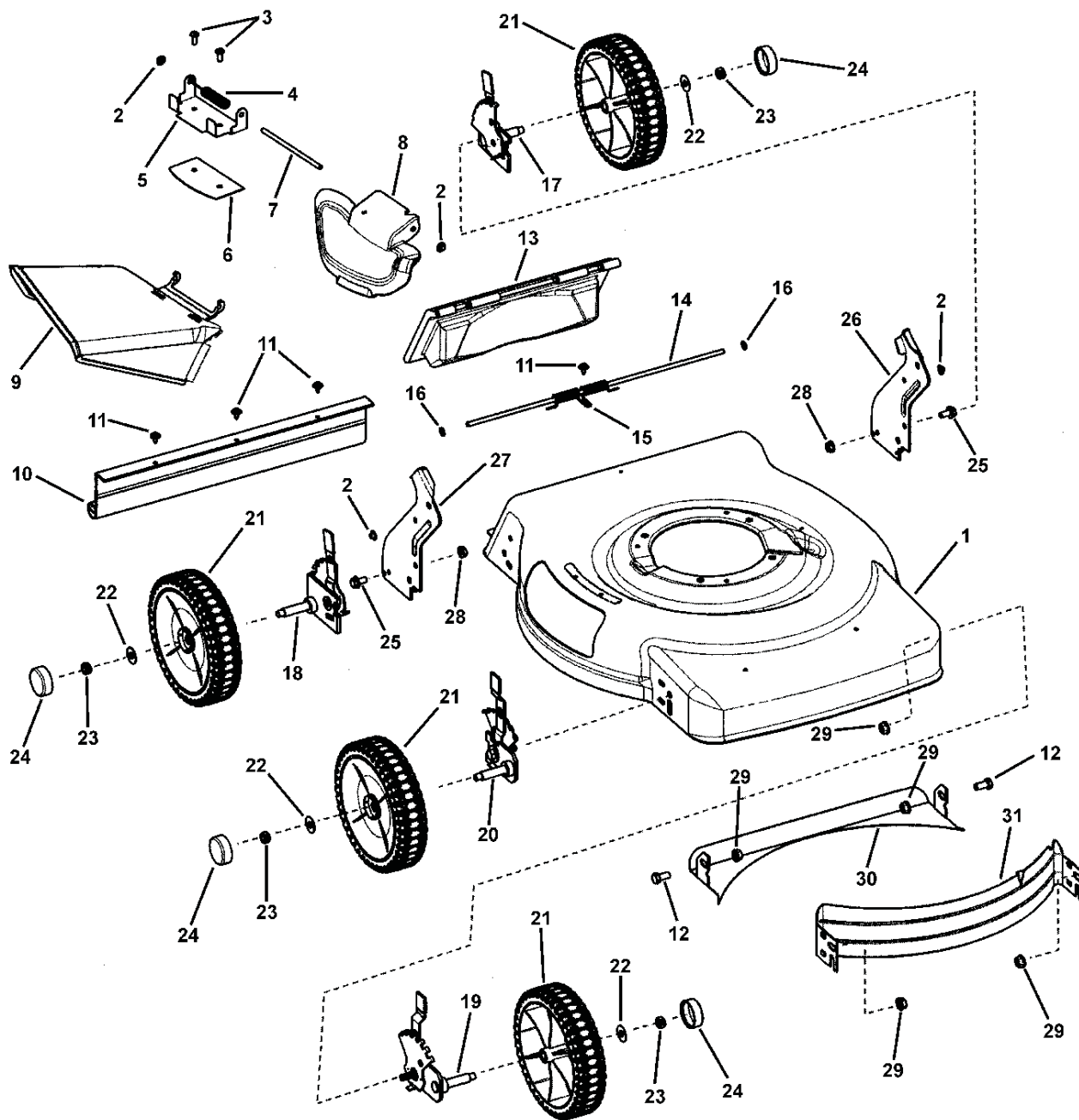
7800201 - MD2250

7800239 - NMD2250

Deck Assembly - Push, 3-n-1

m322dapu

NOTE: Unless noted otherwise,
use the standard hardware torque
specification chart.



The above parts group applies to the following Mfg. Nos.:

- 7800202 - MD2255
- 7800240 - NM2255
- 7800257 - MD2250FC
- 7800258 - M2255FC
- 7800369 - M2255HFC

Briggs and Stratton Yard Power Products Group
Copyright © 2010 by Briggs and Stratton Corporation
Milwaukee, WI, USA. All rights reserved

Deck Assembly - Push, 3-n-1

REF NO	PART NO.	QTY.	DESCRIPTION
1	7300401ZYP	1	DECK, 22" Walk, Push 3-N-1
2	7091020YP	4	PUSHNUT, 1/4"
3	26X217MA	3	SCREW, 1/4-20 x 11/16" Pan Head Self-Tap - Torx
4	166X38MA	1	SPRING, Chute - Torsion
5	7300855ZMA	1	BRACKET, Chute
6	7300856ZMA	1	PLATE, Mulch, 22" RB Scott's
7	215X19ZMA	1	ROD, Chute Pivot - 1/4" Dia. x 5.55"
8	1101098MA	1	COVER, Mulch, Plastic, Black
9	1101097MA	1	SIDE CHUTE, Plastic, Black
10	1101105MA	1	GUARD, Rear
11	7091286YP	4	SCREW, #10-24 x 1/2" Hex Washer Self-Tap - Sems
12	7091086YP	4	SCREW, 3/8-16 x 3/4" Hex Head Cap, GR 5
13	1101070MA	1	DOOR, Rear Discharge, 22" Walk Mower
14	215X21MA	1	ROD, Pivot, Rear Door - 1/4" Dia. X 17-1/2"
15	7101461YP	1	SPRING, Torsion, Rear Door, 22" Walk Mower
16	028X49MA	2	CAP, Retainer
17	7501066YP	1	ASSY, Height-of-Cut, Left Rear, 7 Position
18	7501065YP	1	ASSY, Height-of-Cut, Right Rear, 7 Position
19	7501064YP	1	ASSY, Height-of-Cut, Left Front, 7 Position
20	7501063YP	1	ASSY, Height-of-Cut, Right Front, 7 Position
21	7500860YP	4	ASSY, Wheel, 8"x 2" Idle, NB Murray Tread, Gray
22	17X169MA	4	WASHER, 1" O.D. x .387 I.D. Flat
23	7091585SM	4	NUT, 3/8-16 Hex Center Lock, YZ
24	7101351MA	4	HUBCAP, Round, Black
25	7091811SM	2	BOLT, 5/16-18 x 5/8" Hex Flange Lock, GR 5 YZ
26	7300890ZYP	1	BRACKET, Lower Handle, RH
27	7300891ZYP	1	BRACKET, Lower Handle, LH
28	7091601SM	2	NUT, 5/16-18 Flange Lock, YZ
29	7900053MA	8	NUT, 3/8-16 Hex Flange Lock, GR 5
30	7300854ZMA	1	BAFFLE, Rear, 22" Deck
31	7300440ZMA	1	BAFFLE, Front, 22" WBM

Footnotes

The above parts group applies to the following Mfg. Nos.:

7800202 - MD2255

7800240 - NM2255

7800257 - MD2250FC

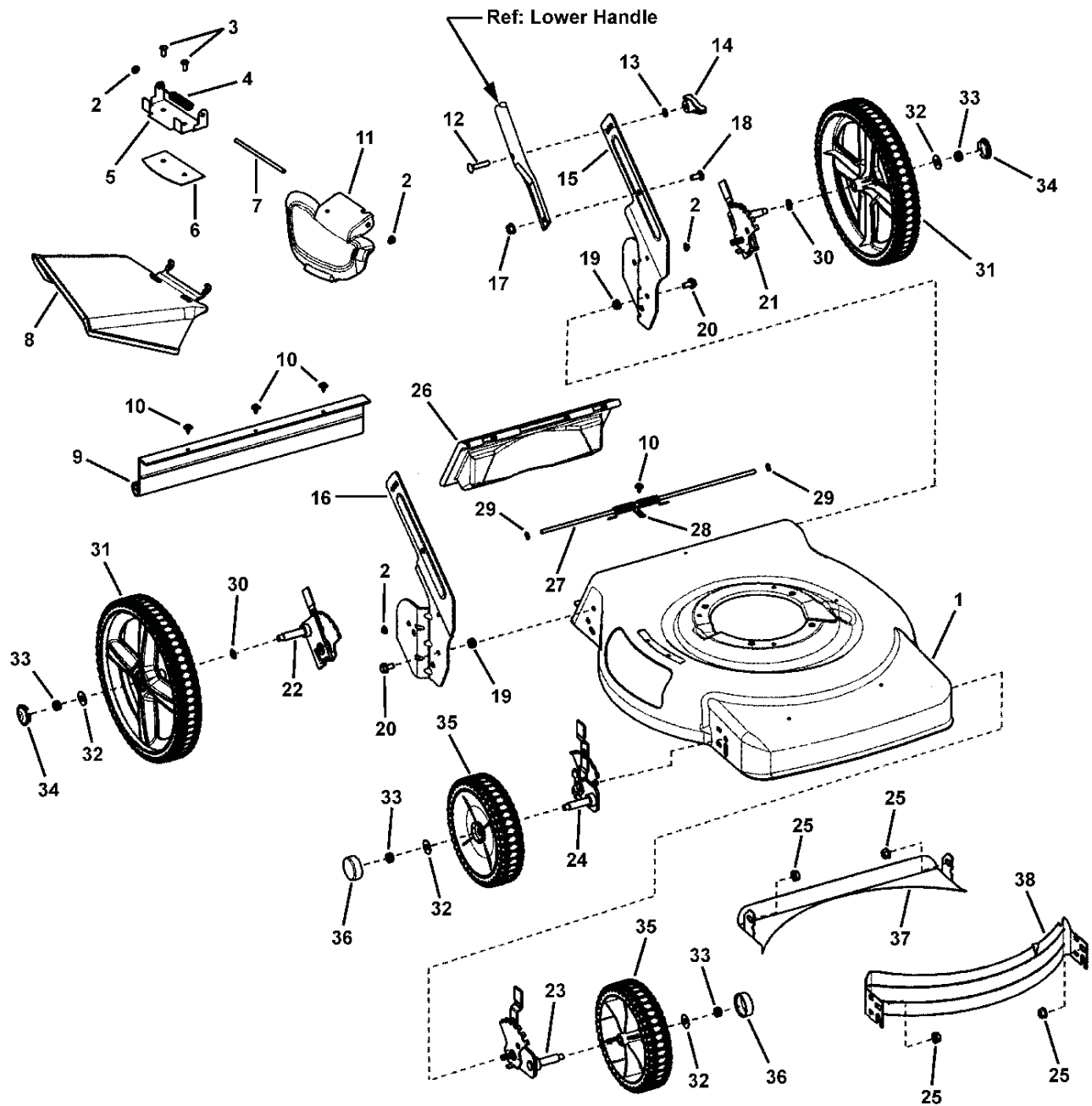
7800258 - M2255FC

7800369 - M2255HFC

Deck Assembly - Push, Hi-Wheel

m22_dahw

NOTE: Unless noted otherwise,
use the standard hardware torque
specification chart.



The above parts group applies to the following Mfg. Nos.:

7800203 - M2265HW
7800241 - NM2265HW
7800259 - M2265HWFC

Deck Assembly - Push, Hi-Wheel

REF NO	PART NO.	QTY.	DESCRIPTION
1	7300401ZYP	1	DECK, 22" Walk, Push 3-N-1
2	7091020YP	4	PUSHNUT, 1/4"
3	26X217MA	3	SCREW, 1/4-20 x 11/16" Pan Head Self-Tap - Torx
4	166X38MA	1	SPRING, Chute - Torsion
5	7300855ZMA	1	BRACKET, Chute
6	7300856ZMA	1	PLATE, Mulch, 22" RB Scott's
7	215X19ZMA	1	ROD, Chute Pivot - 1/4" Dia. x 5.55"
8	1101097MA	1	SIDE CHUTE, Plastic, Black
9	672684MA	1	GUARD, Rear 22" Hi-Wheel
10	7091286YP	4	SCREW, #10-24 x 1/2" Hex Washer Self-Tap - Sems
11	1101098MA	1	COVER, Mulch, Plastic, Black
12	002X81MA	2	BOLT, 5/16-18 x 1-1/2" Square Neck Carriage
13	7090391SM	2	WASHER, 5/16" Internal Tooth Lock
14	7035744YP	2	KNOB, 5/16-18 Wing - Black
15	7300583ZMA	1	BRACKET, Lower Handle, LH, 22" WBM, Hi-Wheel
16	7300582ZMA	1	BRACKET, Lower Handle, RH, 22" WBM, Hi-Wheel
17	7090951SM	2	NUT, 5/16-18 Large Flange Center Lock
18	7090001YP	2	BOLT 5/16-18 x 3/4" Round Head Short Square Neck
19	7091585SM	4	NUT, 3/8-16 Hex Center Lock, YZ
20	7090606SM	2	BOLT, 5/16-18 x 5/8" Hex Flange Lock
21	7501066YP	1	ASSY, Height-of-Cut, Left Rear, 7 Position
22	7501065YP	1	ASSY, Height-of-Cut, Right Rear, 7 Position
23	7501064YP	1	ASSY, Height-of-Cut, Left Front, 7 Position
24	7501063YP	1	ASSY, Height-of-Cut, Right Front, 7 Position
25	7900053MA	6	NUT, 3/8-16 Hex Flange Lock, GR 5
26	1101070MA	1	DOOR, Rear Discharge, 22" Walk Mower
27	215X21MA	1	ROD, Pivot, Rear Door - 1/4" Dia. X 17-1/2"
28	7101461YP	1	SPRING, Torsion, Rear Door, 22" Walk Mower
29	028X49MA	2	CAP, Retainer
30	7026257MA	2	WASHER, .531 x .781 3-Wave
31	7500861YP	2	ASSY, Wheel, 12" x 2" Idle, NB, Murray Tread, Gray
32	17X169MA	4	WASHER, 1" O.D. x .387 I.D. Flat
33	7090585MA	2	NUT, 5/16-18 Flange Lock
34	7101392YP	2	HUBCAP, 12" Wheel, Murray Gray
35	7500860YP	2	ASSY, Wheel 8" x 2" Idle, NB Murray Tread, Gray
36	7101351MA	2	HUBCAP, Round, Black
37	7300854ZMA	1	BAFFLE, Rear, 22" Deck
38	7300440ZMA	1	BAFFLE, Front, 22" WBM

Footnotes

The above parts group applies to the following Mfg. Nos.:

7800203 - M2265HW

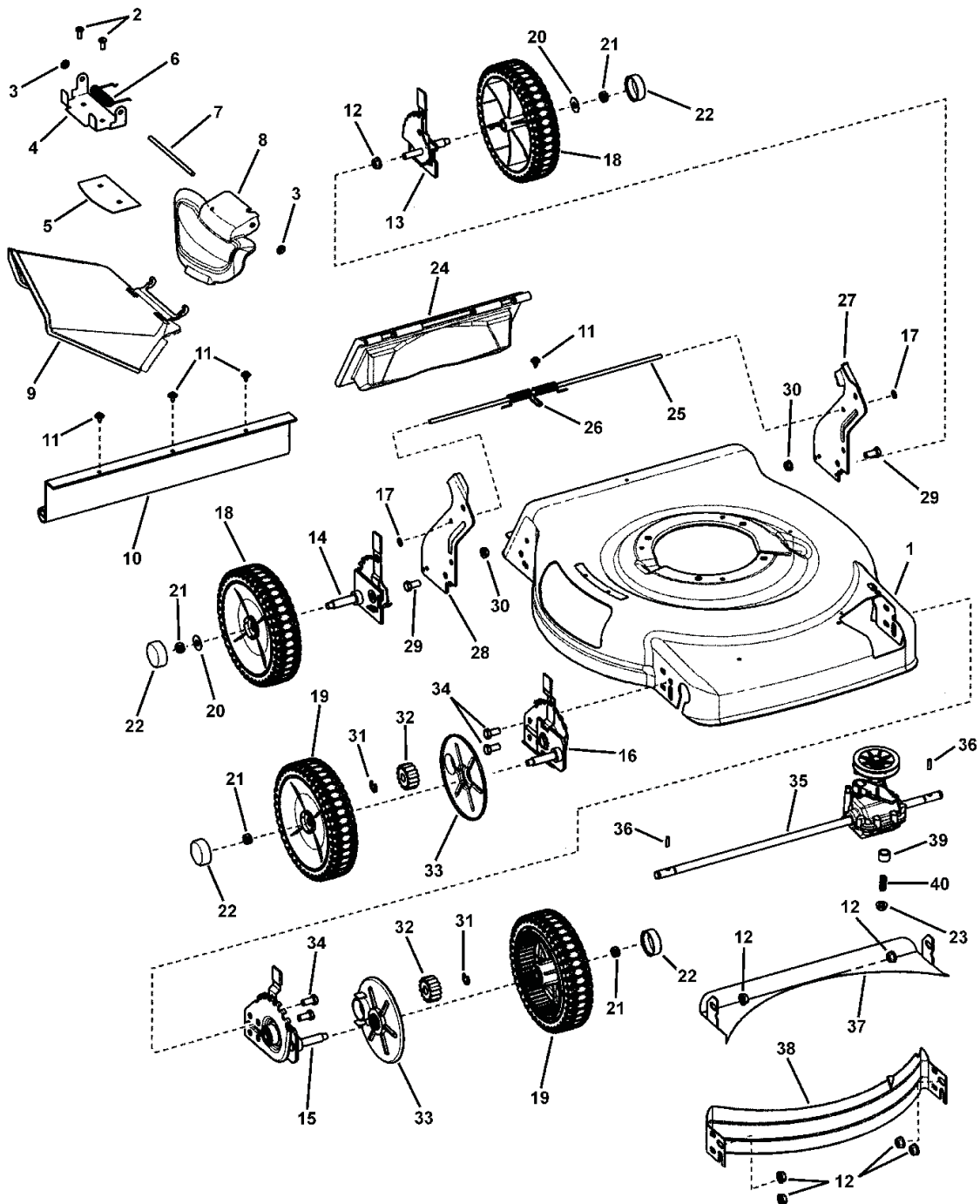
7800241 - NM2265HW

7800259 - M2265HWFC

Deck Assembly - Self-Propelled, Standard Wheels

mp22dasw

NOTE: Unless noted otherwise,
use the standard hardware torque
specification chart.



The above parts group applies to the following Mfg. Nos.:

7800204 - MP2265

7800242 - NMP2265

7800260 - MP2265FC

Deck Assembly - Self-Propelled, Standard Wheels

REF NO	PART NO.	QTY.	DESCRIPTION
1	7300400ZMA	1	DECK, 22" Walk, 3-N-1
2	26X217MA	3	SCREW, 1/4-20 x 11/16" Pan Head Self-Tap - Torx
3	7091020YP	4	PUSHNUT, 1/4"
4	7300855ZMA	1	BRACKET, Chute
5	7300856ZMA	1	PLATE, Mulch, 22" RB Scott's
6	166X38MA	1	SPRING, Chute - Torsion
7	215X19ZMA	1	ROD, Chute Pivot - 1/4" Dia. x 5.55"
8	1101098MA	1	COVER, Mulch, Plastic, Black
9	1101097MA	1	SIDE CHUTE, Plastic, Black
10	1101105MA	1	GUARD, Rear
11	7091286YP	4	SCREW, #10-24 x 1/2" Hex Washer Self-Tap - Sems
12	7900053MA	8	NUT, 3/8-16 Hex Flange Lock, GR 5
13	7501066YP	1	ASSY, Height-of-Cut, Left Rear, 7 Position
14	7501065YP	1	ASSY, Height-of-Cut, Right Rear, 7 Position
15	7501061YP	1	ASSY, Height-of-Cut, Left Front, 22" WBM, Self-Prop, 7 Position
16	7501062YP	1	ASSY, Height-of-Cut, Right Front, 22" WBM, Self-Prop, 7 Position
17	028X49MA	2	CAP, Retainer
18	7500860YP	2	ASSY, Wheel, 8" x 2" Idle, NB Murray Tread, Gray
19	7500862YP	2	ASSY, Wheel, 8" x 2" Drive, NB, Murray Tread, Gray
20	17X169MA	4	WASHER, 1" O.D. x .387 I.D. Flat
21	7091585SM	4	NUT, 3/8-16 Hex Center Lock, YZ
22	7101351MA	4	HUBCAP, Round, Black
23	015X88MA	1	NUT, 5/16-18 Hex Flange Lock
24	1101070MA	1	DOOR, Rear Discharge, 22" Walk Mower
25	215X21MA	1	ROD, Pivot, Rear Door - 1/4" Dia. X 17-1/2"
26	7101461YP	1	SPRING, Torsion, Rear Door, 22" Walk Mower
27	7300890ZYP	1	BRACKET, Lower Handle, RH
28	7300891ZYP	1	BRACKET, Lower Handle, LH
29	7091811SM	2	BOLT, 5/16-18 x 5/8" Hex Flange Lock, YZ
30	7091601SM	2	NUT, 5/16-18 Flange Lock, YZ
31	7014341YP	4	RING, External Retaining
32	7101207YP	2	GEAR, Pinion, 22" WBM, FWD
33	7101402YP	2	SHIELD, Dust, 22" WBM, FWD
34	7091086YP	4	SCREW, 3/8-16 x 3/4" Hex Head Cap, GR 5
35	7101206MA	1	TRANSMISSION, 22" WBM Single Speed, Front Wheel Drive
36	7101270YP	2	DRIVE PIN, 22" WBM, Front Wheel Drive
37	7300854ZMA	1	BAFFLE, Rear, 22" Deck
38	7300440ZMA	1	BAFFLE, Front, 22" WBM
39	043844MA	1	SPACER, Engine
40	164X27MA	1	SPRING, Compression

Footnotes

The above parts group applies to the following Mfg. Nos.:

7800204 - MP2265

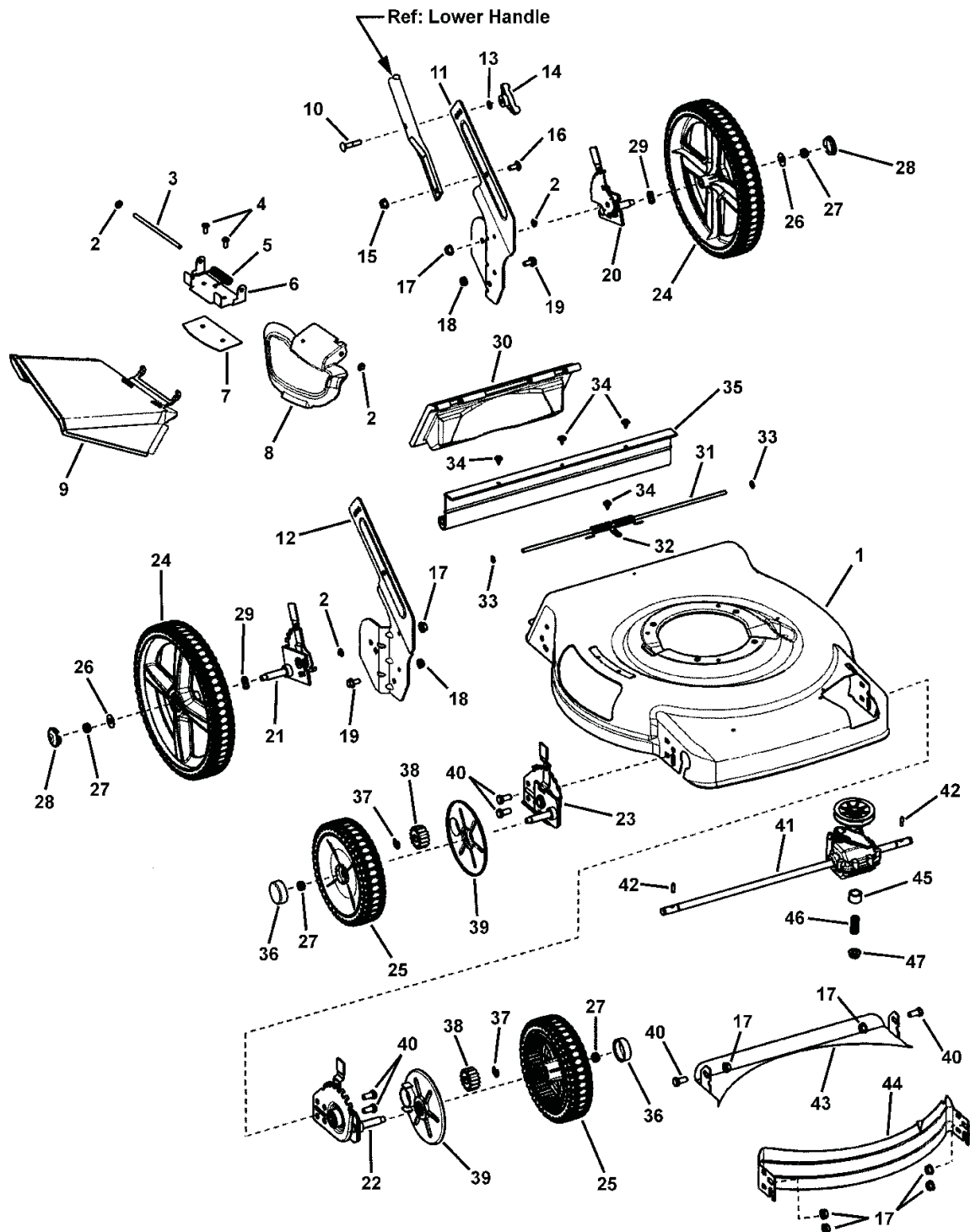
7800242 - NMP2265

7800260 - MP2265FC

Deck Assembly - Self-Propelled, Hi-Wheel

mp22dahw

NOTE: Unless noted otherwise,
use the standard hardware torque
specification chart.



The above parts group applies to the following Mfg. Nos.:

7800205 - MP22675HW
7800243 - NMP22675HW
7800261 - MP22675HWFC

Deck Assembly - Self-Propelled, Hi-Wheel

REF NO	PART NO.	QTY.	DESCRIPTION
1	7300400ZMA	1	DECK, 22" Walk, 3-N-1
2	7091020YP	4	PUSHNUT, 1/4"
3	215X19ZMA	1	ROD, Chute Pivot - 1/4" Dia. x 5.55"
4	26X217MA	3	SCREW, 1/4-20 x 11/16" Pan Head Self-Tap - Torx
5	166X38MA	1	SPRING, Chute - Torsion
6	7300855ZMA	1	BRACKET, Chute
7	7300856ZMA	1	PLATE, Mulch, 22" RB Scott's
8	1101098MA	1	COVER, Mulch, Plastic, Black
9	1101097MA	1	SIDE CHUTE, Plastic, Black
10	002X81MA	2	BOLT, 5/16-18 x 1-1/2" Square Neck Carriage
11	7300583ZMA	1	BRACKET, Lower Handle, LH, 22" WBM, Hi-Wheel
12	7300582ZMA	1	BRACKET, Lower Handle, RH, 22" WBM, Hi-Wheel
13	7090391SM	2	WASHER, 5/16" Internal Tooth Lock
14	7035744YP	2	KNOB, 5/16-18 Wing - Black
15	7090951SM	2	NUT, 5/16-18 Large Flange Center Lock
16	7090001YP	2	BOLT 5/16-18 x 3/4" Round Head Short Square Neck
17	7900053MA	8	NUT, 3/8-16 Hex Flange Lock, GR 5
18	7090585MA	2	NUT, 5/16-18 Flange Lock
19	7090606SM	2	BOLT, 5/16-18 x 5/8" Hex Flange Lock
20	7501066YP	1	ASSY, Height-of-Cut, Left Rear, 7 Position
21	7501065YP	1	ASSY, Height-of-Cut, Right Rear, 7 Position
22	7501061YP	1	ASSY, Height-of-Cut, Left Front, 22" WBM, Self-Prop, 7 Position
23	7501062YP	1	ASSY, Height-of-Cut, Right Front, 22" WBM, Self-Prop, 7 Position
24	7500861YP	2	ASSY, Wheel, 12" x 2" Idle, NB, Murray Tread, Gray
25	7500862YP	2	ASSY, Wheel, 8" x 2" Drive, NB, Murray Tread, Gray
26	17X169MA	4	WASHER, 1" O.D. x .387 I.D. Flat
27	7091585SM	4	NUT, 3/8-16 Hex Center Lock, YZ
28	7101392YP	2	HUBCAP, 12" Wheel, Gray
29	7026257MA	2	WASHER, .531 x .781 3-Wave
30	1101070MA	1	DOOR, Rear Discharge, 22" Walk Mower
31	215X21MA	1	ROD, Pivot, Rear Door - 1/4" Dia. X 17-1/2"
32	7101461YP	1	SPRING, Torsion, Rear Door, 22" Walk Mower
33	028X49MA	2	CAP, Retainer
34	7091286YP	4	SCREW, #10-24 x 1/2" Hex Washer Self-Tap - Sems
35	672684MA	1	GUARD, Rear 22" Hi-Wheel
36	7101351MA	2	HUBCAP, Round, Black
37	7014341YP	4	RING, External Retaining
38	7101207YP	2	GEAR, Pinion, 22" WBM, FWD
39	7101402YP	2	SHIELD, Dust, 22" WBM, FWD
40	7091086YP	4	SCREW, 3/8-16 x 3/4" Hex Head Cap, GR 5
41	7101206MA	1	TRANSMISSION, 22" WBM Single Speed, Front Wheel Drive
42	7101270YP	2	DRIVE PIN, 22" WBM, Front Wheel Drive
43	7300854ZMA	1	BAFFLE, Rear, 22" Deck

Footnotes

The above parts group applies to the following Mfg. Nos.:

7800205 - MP22675HW

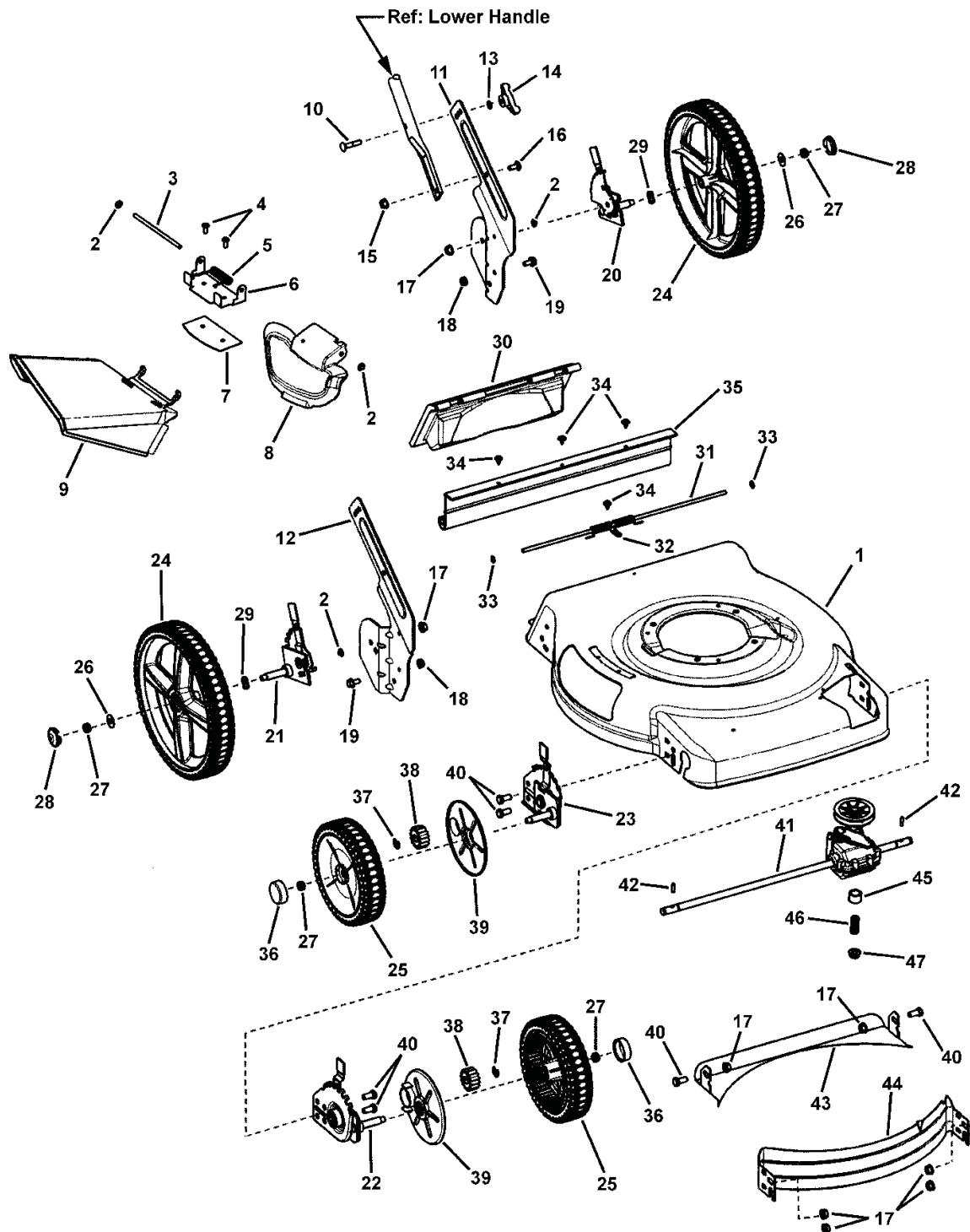
7800243 - NMP22675HW

7800261 - MP22675HWFC

Deck Assembly - Self-Propelled, Hi-Wheel

mp22dahw

NOTE: Unless noted otherwise,
use the standard hardware torque
specification chart.



The above parts group applies to the following Mfg. Nos.:

7800205 - MP22675HW

7800243 - NMP22675HW

7800261 - MP22675HWFC

Deck Assembly - Self-Propelled, Hi-Wheel

REF NO	PART NO.	QTY.	DESCRIPTION
44	7300440ZMA	1	BAFFLE, Front, 22" WBM
45	043844MA	1	SPACER, Engine
46	164X27MA	1	SPRING, Compression
47	015X88MA	1	NUT, 5/16-18 Hex Flange Lock

Not for
Reproduction

Footnotes

The above parts group applies to the following Mfg. Nos.:

7800205 - MP22675HW

7800243 - NMP22675HW

7800261 - MP22675HWFC

Not for
Reproduction

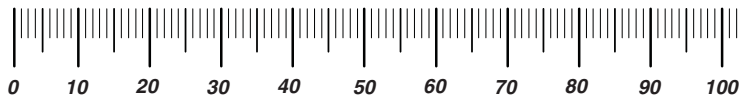
Not for
Reproduction

Not for
Reproduction

Hardware Identification & Torque Specifications

Torque Specification Chart								
FOR STANDARD METRIC MACHINE HARDWARE (Tolerance ± 20%)								
Property Class	5.6		8.8		10.9		12.9	
	Class 5.6		Class 8.8		Class 10.9		Class 12.9	
Size Of Hardware	in/lbs		in/lbs		in/lbs		in/lbs	
	ft/lbs	Nm.	ft/lbs	Nm.	ft/lbs	Nm.	ft/lbs	Nm.
M3	5.88	.56	13.44	1.28	19.2	1.80	22.92	2.15
M4	13.44	1.28	30.72	2.90	43.44	4.10	52.56	4.95
M5	26.4	2.50	60.96	5.75	5.97	8.10	7.15	9.7
M6	44.64	4.3	7.3	9.9	10.3	14	12.1	16.5
M7	5.2	7.1	12.1	16.5	16.9	23	19.9	27
M8	7.7	10.5	17.7	24	25	34	29	40
M10	15	21	35	48	50	67	59	81
M12	26	36	61	83	86.2	117	103	140
M14	42	58	101	132	136	185	162	220
M16	64	88	147	200	210	285	250	340
M18	89	121	202	275	287	390	346	470
M20	126	171	290	390	405	550	486	660
M22	169	230	390	530	559	745	656	890
M24	217	295	497	375	708	960	840	1140
M27	320	435	733	995	1032	1400	1239	1680
M30	435	590	995	1350	1401	1900	1681	2280
M33	590	800	1349	1830	1902	2580	2278	3090
M36	759	1030	1740	2360	2441	3310	2935	3980
M39	988	1340	2249	3050	3163	4290	3798	5150

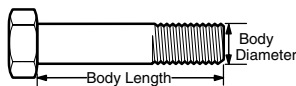
The guides and ruler furnished below are designed to help you select the appropriate hardware.



Nut, M8

Thread Diameter (mm)
Inside Diameter (in)
Threads per inch

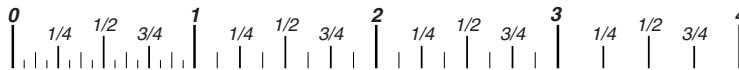
Nut, 1/2-16



Screw, M8- 1.25 x 25

Thread Diameter (mm)
Body Diameter
Distance between threads (mm)
Threads per inch
Body Length (mm)
Body Length (in)

Screw, 1/2- 16 x 2



Standard Hardware Sizing

When a washer or nut is identified as **1/2"** (M8), this is the *Nominal size*, meaning the *inside diameter* is 1/2 inch (8mm metric thread diameter); if a second number is present it represents the *threads per inch* (distance between threads).

When bolt or capscrew is identified as **1/2 - 16 x 2"** (M8 - 1.25 x 50), this means the *Nominal size*, or body diameter is 1/2 inch (8mm metric thread diameter), the second number, 16, represents the *threads per inch*, (*1.25 thread diameter*). The final number is the body length of the bolt or screw, 2 inches (50mm).

Torque Specification Chart						
FOR STANDARD MACHINE HARDWARE (Tolerance ± 20%)						
Hardware Grade	No Marks		No Marks		No Marks	
	SAE Grade 2		SAE Grade 5		SAE Grade 8	
Size Of Hardware	in/lbs		in/lbs		in/lbs	
	ft/lbs	Nm.	ft/lbs	Nm.	ft/lbs	Nm.
8-32	19	2.1	30	3.4	41	4.6
8-36	20	2.3	31	3.5	43	4.9
10-24	27	3.1	43	4.9	60	6.8
10-32	31	3.5	49	5.5	68	7.7
1/4-20	66	7.6	8	10.9	12	16.3
1/4-28	76	8.6	10	13.6	14	19.0
5/16-18	11	15.0	17	23.1	25	34.0
5/16-24	12	16.3	19	25.8	29	34.0
3/8-16	20	27.2	30	40.8	45	61.2
3/8-24	23	31.3	35	47.6	50	68.0
7/16-14	30	40.8	50	68.0	70	95.2
7/16-20	35	47.6	55	74.8	80	108.8
1/2-13	50	68.0	75	102.0	110	149.6
1/2-20	55	74.8	90	122.4	120	163.2
9/16-12	65	88.4	110	149.6	150	204.0
9/16-18	75	102.0	120	163.2	170	231.2
5/8-11	90	122.4	150	204.0	220	299.2
5/8-18	100	136	180	244.8	240	326.4
3/4-10	160	217.6	260	353.6	386	525.0
3/4-16	180	244.8	300	408.0	420	571.2
7/8-9	140	190.4	400	544.0	600	816.0
7/8-14	155	210.8	440	598.4	660	897.6
1-8	220	299.2	580	788.8	900	1,244.0
1-12	240	326.4	640	870.4	1,000	1,360.0

NOTES

- These torque values are to be used for all hardware excluding: locknuts, self-tapping screws, thread forming screws, sheet metal screws and socket head setscrews.
- Recommended seating torque values for locknuts:
 - for prevailing torque locknuts - use 65% of grade 5 torques.
 - for flange whizlock nuts and screws - use 135% of grade 5 torques.
- Unless otherwise noted on assembly drawings, all torque values must meet this specification.

Common Hardware Types

Hex Head Capscrew



Washer



Lockwasher

Carriage Bolt



Hex Nut

Wrench & Fastener Size Guide

1/4" Bolt or Nut Wrench—7/16"	5/16" Bolt or Nut Wrench—1/2"	3/8" Bolt or Nut Wrench—9/16"	7/16" Bolt or Nut Wrench (Bolt)—5/8" Wrench (Nut)—11/16"	1/2" Bolt or Nut Wrench—3/4"
M6 Bolt or Nut Wrench—10mm	M8 Bolt or Nut Wrench—13mm	M10 Bolt or Nut Wrench—17mm	M12 Bolt or Nut Wrench—19mm	M14 Bolt or Nut Wrench—22mm

Not for
Reproduction

**IT IS THE POLICY OF BRIGGS & STRATTON CORP. TO IMPROVE ITS PRODUCTS
WHENEVER IT IS POSSIBLE AND PRACTICAL TO DO SO. WE RESERVE THE RIGHT TO
MAKE CHANGES OR ADD IMPROVEMENTS AT ANY TIME WITHOUT INCURRING ANY
OBLIGATION TO MAKE SUCH CHANGES ON PRODUCTS.**

Briggs & Stratton Yard Power Products Group

3515 N. 124 Street / PO Box 702
Wauwatosa, WI 53222 USA

www.murray.com

© Copyright 2010 by Briggs & Stratton Corporation
Milwaukee, WI, USA. All rights reserved